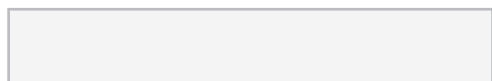


## SERIE KLAY: (ceramica rif. RAL)

### ANETO – CUZCO – NAZCA – NESS



RAL 9003 Bianco latte - White



RAL 7021 Asfalto – Black slate

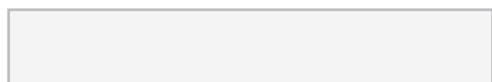


RAL 6021 Verde salvia – Sage green



RAL 5014 Azzurro avio – Aquamarine

### H TAB 101 - H TAB 102 – H TAB 103



RAL 9003 Bianco latte – White



RAL 7021 Asfalto – Black slate



RAL 5003 Blu Cina – Blue

### ZIG ZAG



RAL 9003 Bianco latte – White



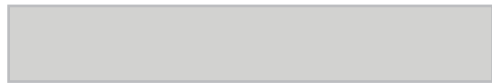
RAL 5022 Blu mare – Blue Navy



RAL 8016 Noce – Walnut brown

## SERIE AMBRA: (resina, rif. Colore collection SIKKENS 4041)

ANETO – CUZCO – NAZCA – NESS – H TAB 101 – H TAB 102 – H TAB 103



ON.00.78 Grigio perla – Pearl gray



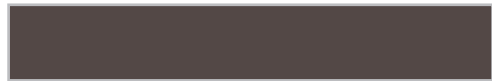
CN. 02.47 Grigio Londra – London Gray



CO.05.65 Rosa antico – Antique pink



F2. 10.70 Naturale – Sand



CO.05.25 Moro – Dark brown

## SERIE ACCIAIO: (acciaio rif. RAL)

SHIELD 300 – RAMÈ 1000/1500



RAL 9010 Avorio – White



RAL 7021 Asfalto – Black slate

SHIELD 100



RAL 9010 Avorio – White



RAL 7021 Asfalto – Black slate



RAL 5003 Blu Cina – Blue

H PAD



RAL 9010 Avorio – White